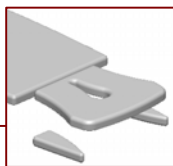
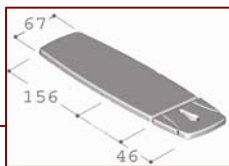


# Duoflex Luxe

*This uncomplicated treatment and examination couch has the same qualities as the Duoplus, but has additional armrests. The armrests are adjustable and they provide an extremely comfortable ventral position, with the best possible relaxation of the shoulder and neck muscles. The armrests can be removed.*



- 2-section support surface, with a short head support.
- Head section can be adjusted positively and negatively, and can also be adjusted almost fully downwards.
- Plenty of free space underneath the head section.
- Provided with armrests



## Standard features

- Cushions with duo-padding, with a high-density lower layer.
- The luxe cushions have been finished with tough saddle stitching.
- Central wheel-lifting mechanism with 4 casters.
- All sections gas spring supported.
- Gymna Stability Profile (GSP).
- Non slip feet.
- Breathing hole head section, incl. cushion.
- Cushions in a choice of 8 colours.
- Prepared for shoulder traction supports.



## Specifications

Length x width	: ± 202 x 67cm
Height adjustment	: ± 45 - 95 cm
Weight	: ± 84 kg
Maximum Lifting capacity	: 150 kg
Electric motor strength	: 6.000 N
Hydraulic pump strength	: 10.000 N
Power supply	: 110 - 240 VAC 50/60 Hz or 100 VAC 50/60 Hz
Maximum consumption	: 1,5 A
Insulation class	: II
Moister resistance	: IP 54
Classification	: I
Conformity	: CE according to the Medical Devices Directive of the European Commission 93/42/EEG
Guarantee	: 3 Years (upholstery 1 year)

## Ordering data - Duoflex luxe



125.044  
Electric Gymna peripheral switch

## Accessories

- 122 405 Paper roll holder, attaches tot undercarriage
- 105 823 Paper rolls (per 12 pieces)
- 121 409 Extra footswitch for height adjustment
- 125 652 Hand switch for height adjustment
- 107 819 Traction support for hips or shoulders
- 120 040 Foot brace (lean back frame)
- 121 401 Gynaecological leg support
- 333 245 Traction device AutoTrac 460
- 121 434 Attachment frame for the AutoTrac 450/460
- 332 915 Foot end protector for cushion  
Terry-cloth cover, stretch material (9 colours)

## Optional

- 121 404 Set brackets for fastening straps
- 125 610 Motorized head section
- 125 605 Genuine leather upholstery
- 125 608 Cushions 60 cm wide (Luxe)
- 125 609 Cushions 80 cm wide (Luxe)

